



This is Manchester

A Michael Ashcroft Exhibition

CONTEMPORARY SIX

01 – 14 November 2018

Let me welcome you to the wonderful work of Michael Ashcroft MAFA, one of Contemporary Six's most acclaimed artists. We are most proud to host his solo exhibition 'This is Manchester'. Each of the 30 paintings in the show is available for purchase, as are Michael's original concept drawings of the city of Manchester.

A word from the owner of the Gallery, Alex Reuben...

"I believe that Michael Ashcroft is one of the most important living artists in the North West, and his popularity in the Gallery is deservedly immense. We're very excited to be showing such a strong collection of his Manchester series of works in the city that inspired them, and we trust that in its night shades, dusk light, and morning glow, you will recognise within the many faces of this changing city the inimitable personality of Manchester.

All works will be available for purchase from 10:30 on Saturday 27 October — in person or by phoning the Gallery at 0161 835 2666.

I would also like to extend our gratitude to the exhibition's sponsors Hall Brown Family Law."

This is Michael Ashcroft's first solo exhibition at Contemporary Six — it is a rare opportunity to see more than 30 of his works in one place. Works from three of Michael's celebrated Manchester series of paintings will be on show together for the first time — *After the Rain*, *Painting My Favourite Pubs*, and *Manchester From Afar*.

A master of landscape and cityscape in oils, Michael's truthful style has captured the heart of this city and its art-lovers. His familiar Northern scenes, such as wet roads at dusk, raddled pub facades, and landmarks in the afternoon sun are painted to celebrate the bustling and beautiful nature of Manchester to residents and visitors alike.

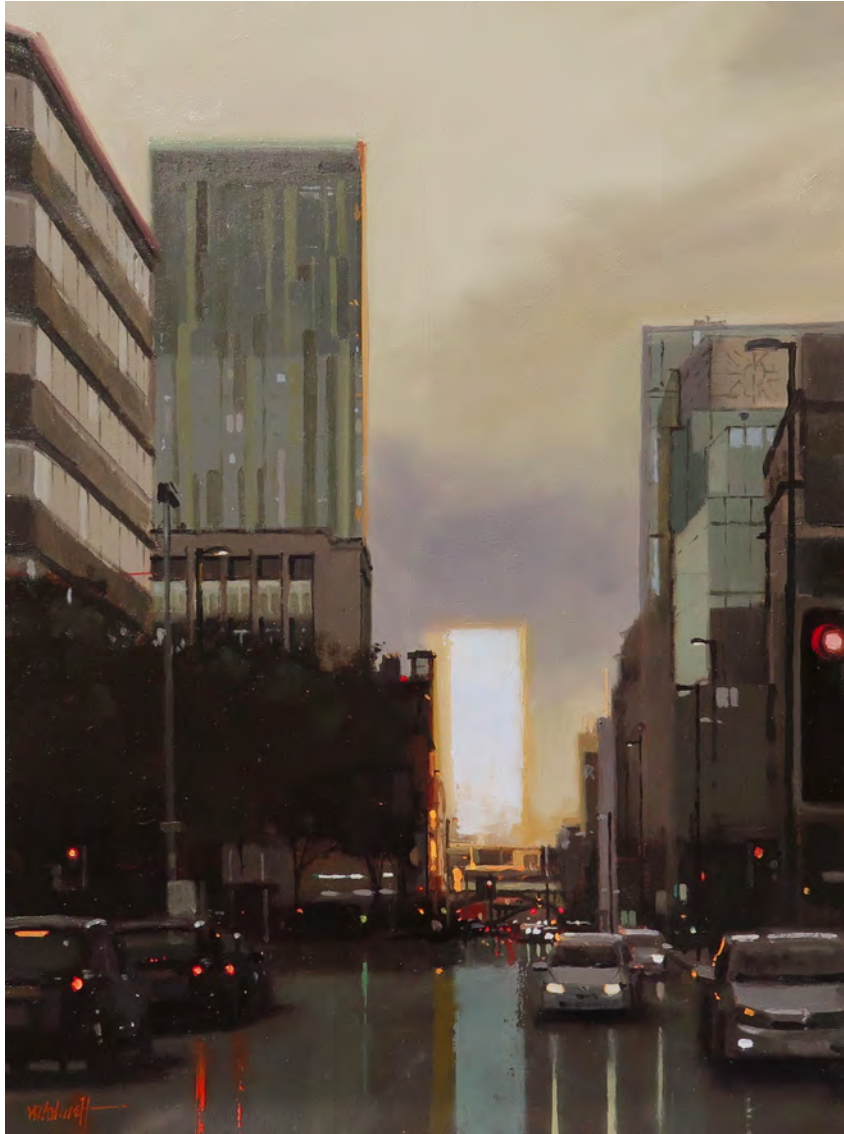
In *After the Rain*, it is plain to see Michael's skill in depicting reflections, and sunlight's dappled quality as it meets thick or dispersing cloud. (Manchester is inseparable from its weather — is it not?) In *Painting My Favourite Pubs*, you can expect the recognisable haunts of Manchester's dearest and beeriest: everywhere from The Smithfield Tavern to the Marble Arch Inn to the Peveril of the Peak — a pub crawl of the highest order. In *Manchester From Afar*, you'll find the breathtaking vistas of the city, replete with industrial plants, twinkling lights, and atmospheric skies.

Michael's works are realistic but painterly, boasting an expert's grasp of composition and contrast, and a faithfulness to his subject. Many art lovers believe his works to be Hopperesque in their style and quality. As Edward Hopper said himself of his own paintings, they are the 'outward expression of the inner life of the artist' — and indeed, it has to be said, Michael's paintings are filled with affection for a city deeply important to him.

As well as the superb array of paintings on show, don't miss Michael's framed ink concept drawings — each depicting the formation of a finalised painting. All will be available to purchase on the preview evening. You can find an example below.

We do hope you enjoy the exhibition, and we look forward to welcoming you to the Gallery.





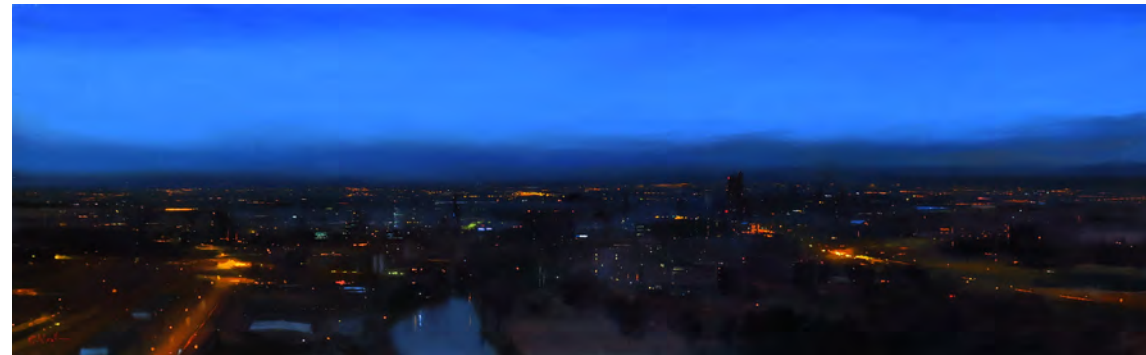
***After Glow, Deansgate,
Manchester***

12" x 9"
Oil on board
£1100



Manchester Skyline

12" x 36"
Oil on board
£2200



This is Manchester

15" x 48"
Oil on board
£3200



The Smithfield Tavern
8" x 10"
Oil on board
£850



The Unicorn
8" x 10"
Oil on board
£850

Oyster Bar, Manchester
8" x 10"
Oil on board
£850

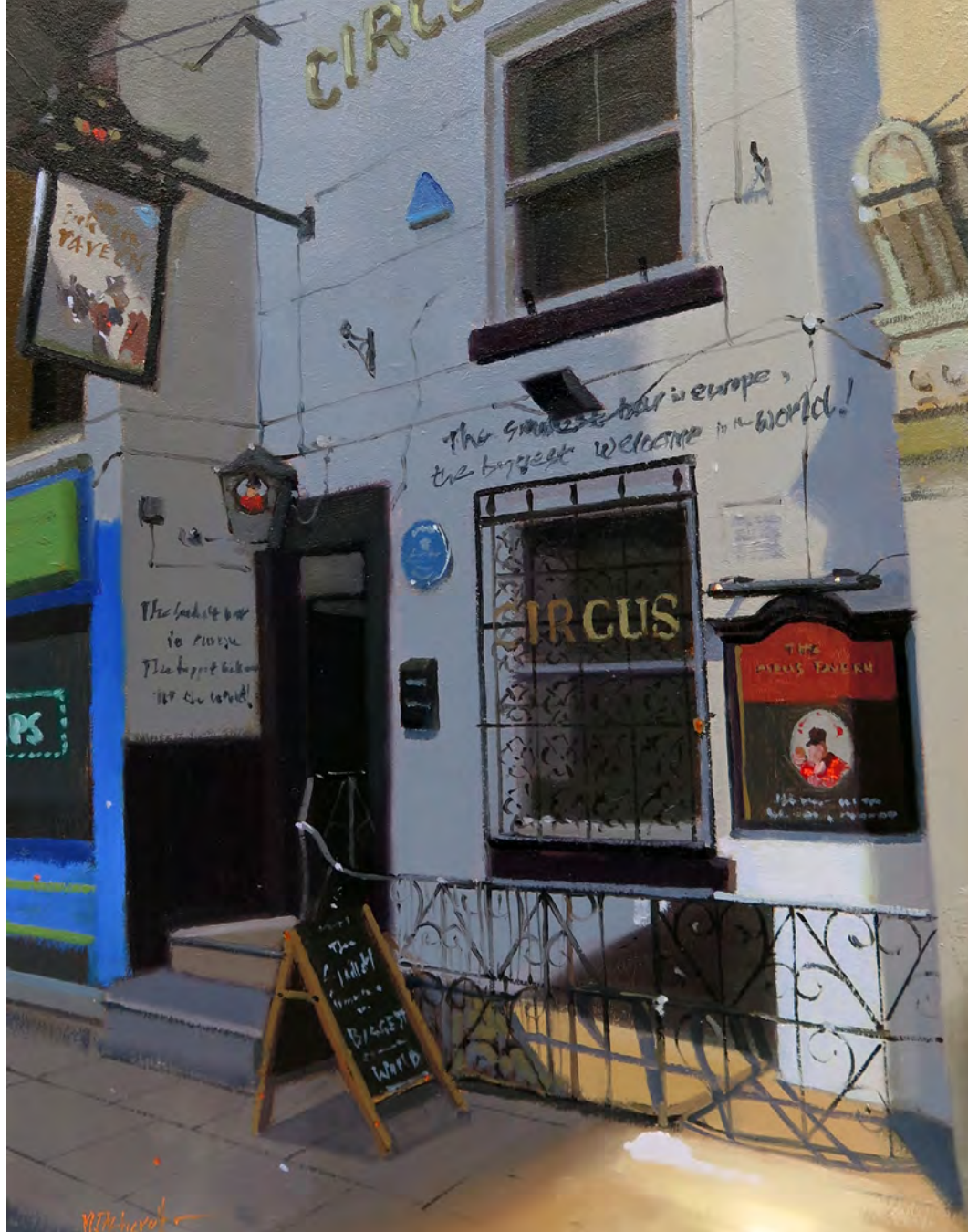


Mackie Mayors, Manchester
8" x 10"
Oil on board
£850



Salford Arms, Manchester
8" x 10"
Oil on board
£850





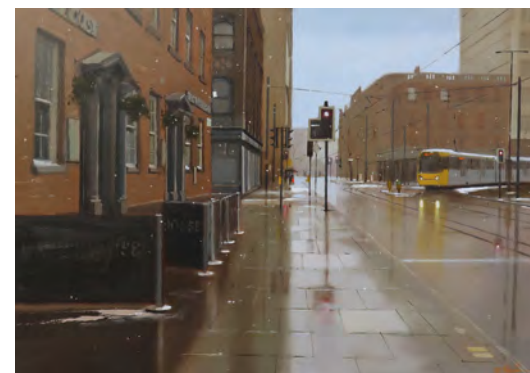
Circus Tavern 1790
11" x 8"
Oil on board
£875



Stands Alone, Marble Arch
10" x 8"
Oil on board
£850



The Angel
8" x 10"
Oil on board
£850



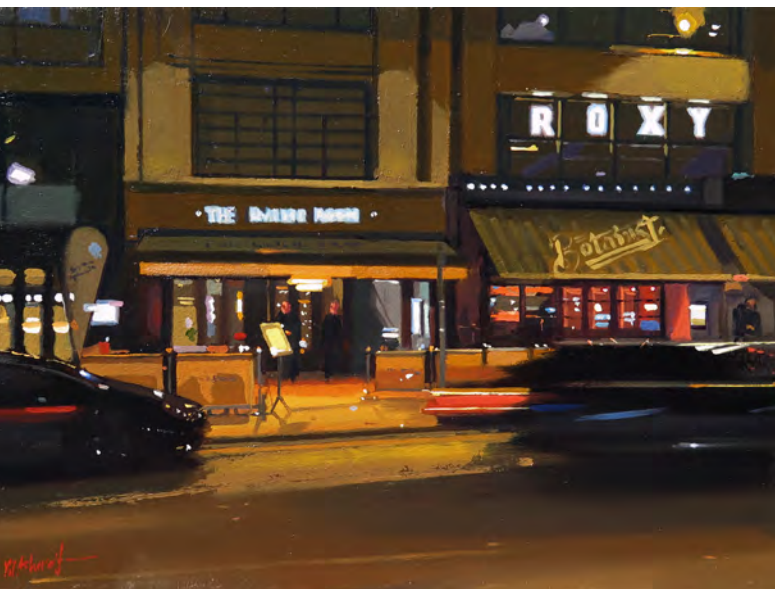
The Waterhouse
16" x 22"
Oil on board
£2500



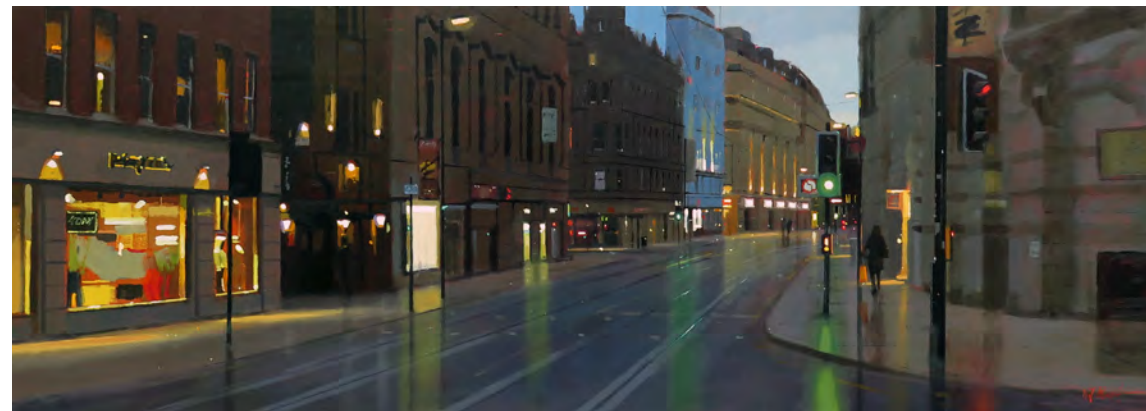
Last Round, Marble Arch
24" x 30"
Oil on board
£3700



Albert's Schloss
9" x 20"
Oil on board
£1700



The Living Room
8" x 11"
Oil on board
£875



Early Start, Cross Street
12" x 32"
Oil on board
£2600

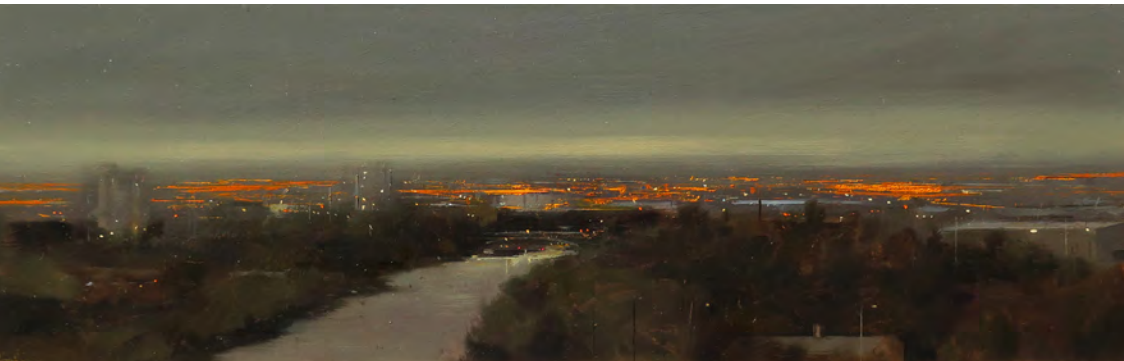


Manchester Horizon

6" x 10"

Oil on board

£700



Manchester A City of Lights

8" x 24"

Oil on board

£1600



Manchester G-Mex

16" x 21"

Oil on board

£2500



***Sneaking Out the Back Door
with a Grin, Burton Arms***

10" x 8"
Oil on board
£850



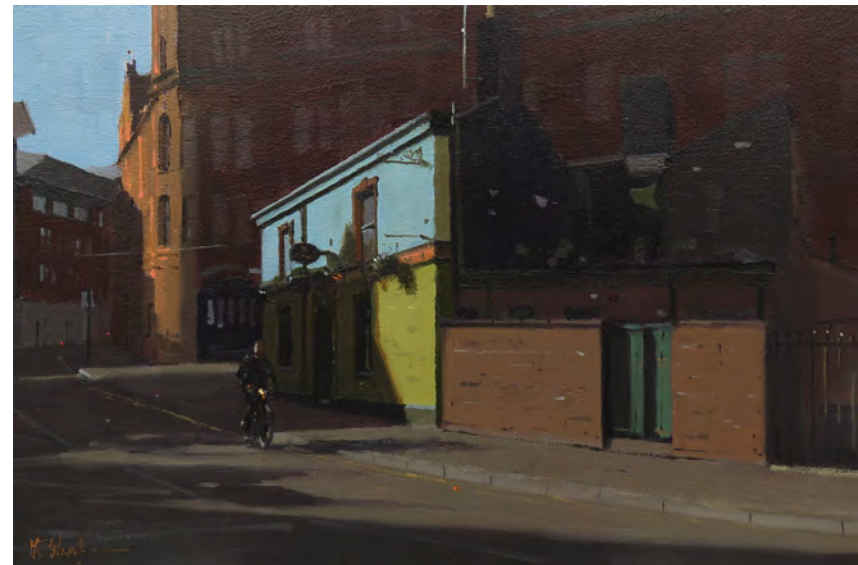
Pint? Gaslamp

8" x 10"
Oil on board
£850



Churchills

8" x 10"
Oil on board
£850



The Right Side of the Pev

8" x 11"
Oil on board
£875



Corner of Mother Macs

11" x 8"
Oil on board
£875



Night and Day

16" x 12"
Oil on board
£2200



Deansgate South
24" x 30"
Oil on board
£3700



Seeing Red
15" x 48"
Oil on board
£3200



Manchester From Afar
30" x 48"
Oil on board
£3900



A Pint in the Marble

10" x 8"
Oil on board
£850



***Open All Hours,
The Deansgate Pub***

10" x 8"
Oil on board
£850



Castlefields Viaducts

30" x 60"
Oil on board
£7000



We Need YOU!!, Britons Protection

9" x 12"
Oil on board
£950



Michael Ashcroft's Limited Edition concept drawings

01 – 14 November 2018
Join us at the preview on
1 November from 5:30 – 8pm

This is Manchester

A Michael Ashcroft Exhibition

CONTEMPORARY SIX

Contemporary Six,
37 Princess Street,
Manchester,
M2 4FN

0161 835 2666
info@contemporarysix.co.uk
www.contemporarysix.co.uk

Kindly sponsored by



Opening Hours

Mon: CLOSED
Tues–Fri: 10:30 – 18:00
Sat: 10:30 – 17:00
Sun: 11:00 – 17:00